

# LIVERMORES

THE ESTATE AGENTS

2 Bedrooms

Flat

Offers In The Region Of

£280,000

Located in

Wilmington



[www.livermores.co.uk](http://www.livermores.co.uk)



# 1 The Spires

Wilmington DA1 2TA



Welcome to this charming flat located in the desirable area of The Spires, Wilmington. This well-proportioned property offers a comfortable living space, perfect for individuals or small families seeking a modern home. Spanning an impressive 721 square feet, the flat features a spacious reception room that provides an inviting atmosphere for relaxation and entertaining guests.

The property boasts two generously sized bedrooms, allowing for ample personal space. These rooms are well-lit and designed to create a peaceful retreat at the end of a busy day. The flat also includes a well-appointed bathroom, ensuring convenience and comfort for all residents.

Situated in Wilmington, this flat benefits from excellent transport links and local amenities, making it an ideal choice for those who commute or enjoy the vibrancy of nearby shops and restaurants. The surrounding area is known for its community spirit and green spaces, providing a pleasant environment for outdoor activities.

This flat presents a wonderful opportunity for anyone looking to settle in a thriving part of Kent. With its appealing layout and prime location, it is sure to attract interest. Do not miss the chance to make this delightful property your new home.



# 1 The Spires

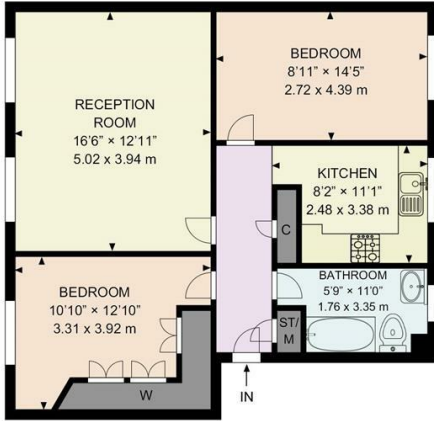
£280,000 Leasehold



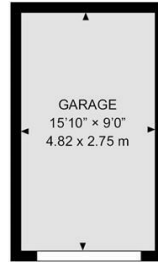
- OFFERS IN THE REGION OF £280,000
- GARAGE & PARKING
- SOUGHT-AFTER LOCATION
- HEALTHY LEASE
- SIMILAR PROPERTIES REQUIRED

- TWO DOUBLE BEDROOMS
- BEAUTIFUL VIEWS FROM LOUNGE & MAIN BEDROOM
- CLOSE PROXIMITY TO DARTFORD TOWN CENTRE & STATION
- GREAT LOCATION FOR GRAMMAR SCHOOLS
- COUNCIL TAX BAND 'C', EPC RATING 'C'





Ground Floor



Outbuildings

**THE SPIRES WILMINGTON DARTFORD DA1**

The plan is intended solely as a layout guide, and no liability is assumed for any errors, omissions, or inaccuracies. It does not constitute, in whole or in part, an offer or contract. Any intending purchaser or lessee should satisfy themselves, through inspection searches, enquiries, and a full survey, as to the accuracy of the information provided. All areas, measurements, wall thicknesses, shapes, compass bearing, and distances are approximate and should not be relied upon for valuation purposes or as the basis of any sale or letting. No guarantee is provided regarding the total area. All measurements are taken at the widest points, internally, with the first measurement referring to the vertical dimension. May not be to scale. Powered by airvideography.com

## Council Tax Band C

## Local Authority DARTFORD

Agents Note: Whilst every care has been taken to prepare these particulars, they are for guidance purposes only. All measurements are approximate and are for general guidance purposes only and whilst every care has been taken to ensure their accuracy, they should not be relied upon and potential buyers/tenants are advised to recheck the measurements.

Energy Efficiency Rating		Current	Potential
Very energy efficient - lower running costs			
(92 plus) <b>A</b>			
(81-91) <b>B</b>			
(69-80) <b>C</b>		69	78
(55-68) <b>D</b>			
(39-54) <b>E</b>			
(21-38) <b>F</b>			
(1-20) <b>G</b>			
Not energy efficient - higher running costs			
<b>England &amp; Wales</b>	EU Directive 2002/91/EC		

1 Hythe Street  
 Dartford  
 Kent  
 DA1 1BE



dartford@livermores.co.uk  
 01322 228090  
 www.livermores.co.uk